

Panasonic[®]

Panaboard Overlayer User's Guide

Image Capture Software for Electronic Whiteboard (Panaboard)

Contents

Introduction	3
Functional Overview	3
Operation Flow.....	3
Abbreviations	4
Trademarks	4
Installing Software	5
System Requirements.....	5
Installing Software.....	5
Using Software	6
Starting and Exiting Software	6
Settings Window	6
Making Preparations	8
Using Software.....	11
Removing Software	12
Troubleshooting.....	13

Introduction

Functional Overview

Panaboard Overlayer is image capture software used to composite a computer screen image projected to an electronic whiteboard with an image drawn on the board by hand. The software can then save the composite image.

Once position alignment (calibration) between the projected image and the scanned image is performed in the settings window after startup, composite images are automatically created and saved to the connected computer each time the electronic board scans the image.

Operation Flow

1. Connect the electronic board and projector to the computer.
2. Start the software.
3. Align the position of the projected image.
 - 3-1. Mark the position of the projection on the electronic board.
 - 3-2. Press the Copy (Start/Stop) key on the electronic board.
 - 3-3. Adjust the position of the scanned image.
4. Specify settings, such as the size of image to be composited.
5. Use the board in an actual situation, such as a meeting.
 - 5-1. Write information on the projected image on the electronic board using a marker.
 - 5-2. Press the Copy (Start/Stop) key on the electronic board to create a composite image.
6. Exit the software.

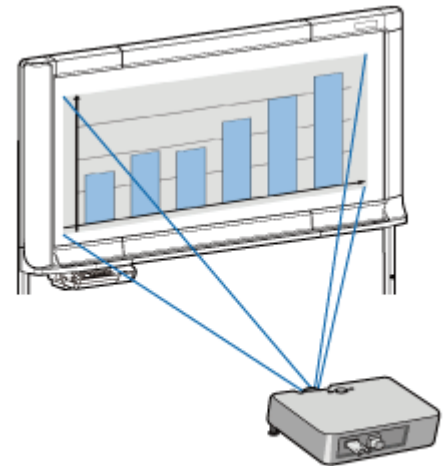
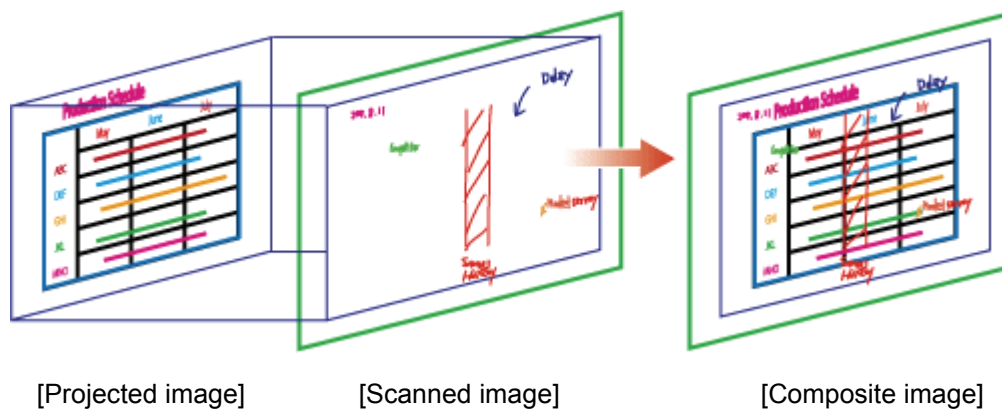


Image Compositing Using Panaboard Overlayer



Abbreviations

- Windows® refers to the Microsoft® Windows® operating system.
- Windows® XP refers to the Microsoft® Windows® XP operating system.
- Windows Vista® refers to the Microsoft® Windows Vista® operating system.
- Windows® 7 refers to the Microsoft® Windows® 7 operating system.

Trademarks

- Intel and Pentium are trademarks of Intel Corporation in the U.S. and other countries.
- Microsoft, Windows, Windows XP, Windows Vista, Windows 7 and Internet Explorer are either registered trademarks or trademarks of Microsoft Corporation in the United States and/or other countries.
- IBM is a trademark of International Business Machines Corporation in the United States, other countries, or both.

- This software is based in part on the work of the Independent JPEG Group.
- This software is based on the “LibTIFF” which has the following copyrights:

Copyright (C) 1988-1997 Sam Leffler

Copyright (C) 1991-1997 Silicon Graphics, Inc.

**** Permission notice for usage of LibTIFF

* Permission to use, copy, modify, distribute, and sell this software and
* its documentation for any purpose is hereby granted without fee, provided
* that (i) the above copyright notices and this permission notice appear in
* all copies of the software and related documentation, and (ii) the names of
* Sam Leffler and Silicon Graphics may not be used in any advertising or
* publicity relating to the software without the specific, prior written
* permission of Sam Leffler and Silicon Graphics.
*

* THE SOFTWARE IS PROVIDED "AS-IS" AND WITHOUT WARRANTY OF
* ANY KIND, EXPRESS, IMPLIED OR OTHERWISE, INCLUDING WITHOUT
* LIMITATION, ANY WARRANTY OF MERCHANTABILITY OR FITNESS FOR
* A PARTICULAR PURPOSE.
*

* IN NO EVENT SHALL SAM LEFFLER OR SILICON GRAPHICS BE LIABLE FOR
* ANY SPECIAL, INCIDENTAL, INDIRECT OR CONSEQUENTIAL DAMAGES OF
* ANY KIND, OR ANY DAMAGES WHATSOEVER RESULTING FROM LOSS OF
* USE, DATA OR PROFITS, WHETHER OR NOT ADVISED OF THE POSSIBILITY
* OF DAMAGE, AND ON ANY THEORY OF LIABILITY, ARISING OUT OF OR IN
* CONNECTION WITH THE USE OR PERFORMANCE OF THIS SOFTWARE.

- All other trademarks identified herein are the property of their respective owners.

Installing Software

System Requirements

Computer	IBM® PC/AT or compatible computer
CPU	Intel® Pentium® 4 or higher
Operating system	Windows® XP (SP3 or later) Windows Vista® (SP2 or later) Windows® 7 (SP1 or later) (Windows XP 64-bit edition is not supported.)
Interface	USB 2.0
Memory (RAM)	2 GB or more
Web browser	Internet Explorer® 6.0 or later

Installing Software

Install the software to the computer with the following procedures:

1. Power on the computer and start Windows.

- Log into an account with Administrator privileges.

2. Double-click the installer "PanaboardOverlayer_Installer.exe".

3. Follow the directions on the screen and continue with the installation.


- If you agree to the "Software License Agreement", check [I accept the terms of the license agreement] and click [Next] and continue with the installation.

4. When the installation completes, click [Finish]


- Restart your computer when you are prompted to do so.
- When the installation completes, "Panaboard Overlayer" will be registered under the "Panasonic" in the program menu.

Using Software

Starting and Exiting Software

- To start the software, select [Start] → [All Programs] → [Panasonic] → [Panaboard Overlayer] → [Panaboard Overlayer].
- When the software starts, the  icon appears in the notification area.



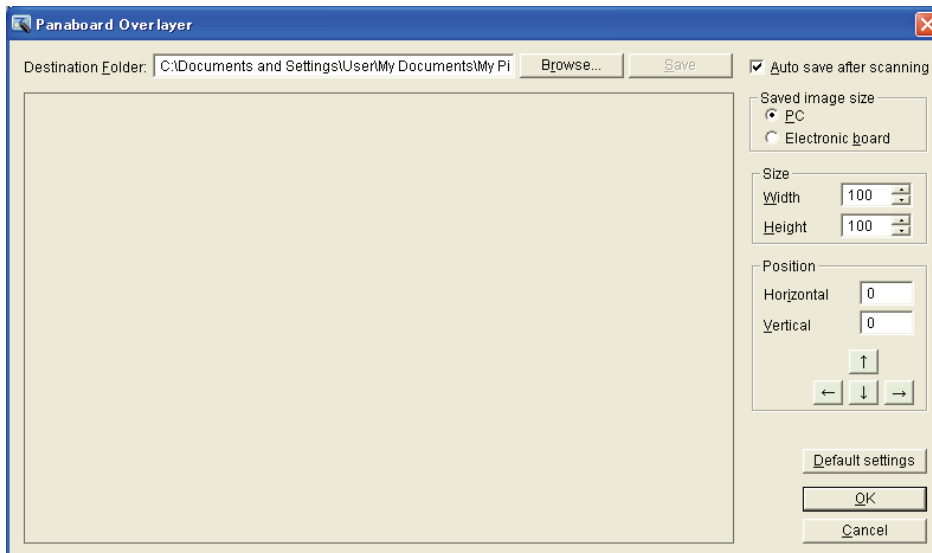
Right-clicking the  icon in the notification area will display the following menus:

- Settings: Displays the settings window.
- Help: Displays the software help section.
- About: Displays the software version information.
- Exit: Exits the software.

- To exit the software, right-click the  icon in the notification area and select [Exit].

Settings Window

The settings window is used to specify the following items:



Destination Folder

Specify the folder to store the image data.

You can also click the [Browse] button to display the folder list and select a folder from the list.

[Save] button

Saves the image with the settings specified in the settings window.

The following image files can be saved in the folder which is specified with [Destination Folder]:

Composite image ... File name: MMDDHHxx_Overlaid

In [Original] folder:

Projected image ... File name: MMDDHHxx_Screenshot

Scanned image ... File name: MMDDHHxx

* The file name and extension are determined according to the electronic board settings. Refer to the user's guide for the electronic board.

File name: MMDDHHxx ... MM: Month, DD: Day, HH: Hour, xx: Serial number

Auto save after scanning

If the [Auto save after scanning] checkbox is selected, the composite image is automatically saved to the specified folder each time the image is scanned by the electronic board.

Do not select the [Auto save after scanning] checkbox if you wish to check the position alignment in the preview window in the settings window each time the electronic board scans the image. In this case, click the [Save] button to save the composite image after calibrating the position as necessary.

Saved image size

With [PC] selected, the composite image size will be the same as that of the projected image. (On the image scanned from the electronic board, the area outside the projected image will be cropped.)

With [Electronic board] selected, the image is saved in the size of the scanned image. Select [Electronic board] if information is written on the area outside of the projected image.

Size (Width/Height)

Specify the zoom level of the scanned image when aligning the position of the projected image and the scanned image.

Position (Vertical/Horizontal)

Specify the position of the scanned image when aligning the position of the projected image and the scanned image. (You can also adjust the position by clicking the [↑], [←], [↓] and [→] buttons, or by pressing the arrow keys while holding down the [Alt] key on the keyboard.)

[Default settings] button

Restores the settings to their default status.

Making Preparations

Before using the software in an actual situation such as a meeting, make preparations such as connecting the devices and calibrating the scanning position.

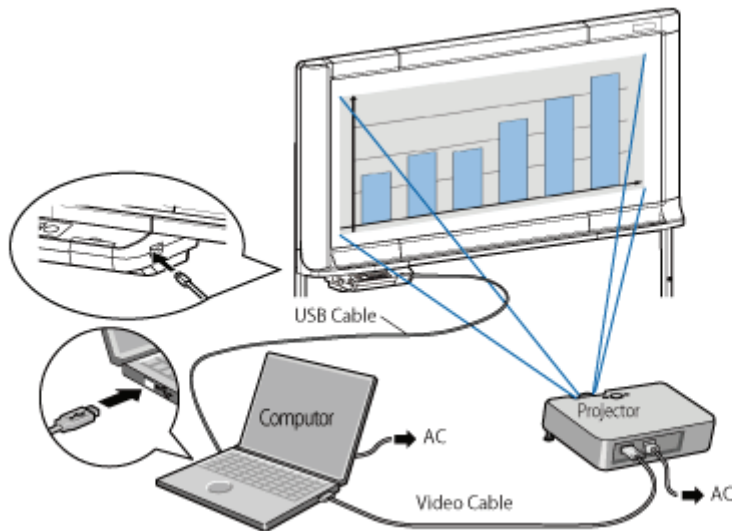
1. Connect the electronic board to a computer connected to a projector.

Connect the electronic board to a computer connected to a projector and project the projector image onto the electronic board.

- When the electronic board is connected to a computer, the board display notifies users that the computer is connected. The computer recognizes the electronic board as a removable disk and displays its drive in Windows Explorer.

Check that the electronic board is properly connected to the computer. If not, the settings for the electronic board might need to be changed. For details, refer to the user's guide for the electronic board.

- The file format for the scanned image and the displayed time are specified on the electronic board. For details, refer to the user's guide for the electronic board.



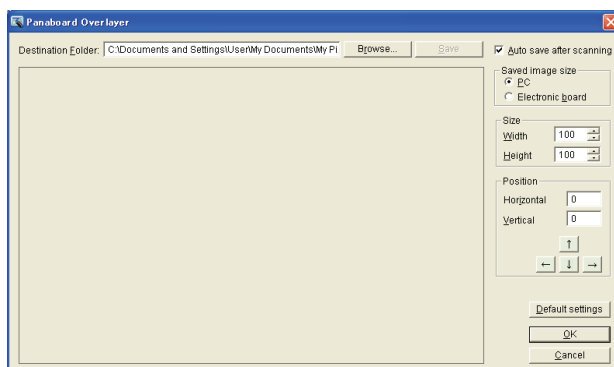
[Connection example]

2. Start the software.

From the [Start] menu on the computer, open [Panaboard Overlayer].

([Start] → [All Programs] → [Panasonic] → [Panaboard Overlayer] → [Panaboard Overlayer])

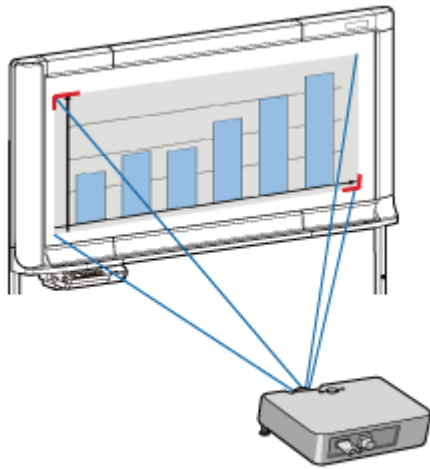
- When the software starts, the settings window appears.



[Settings window]

3. Mark the projection position on the electronic board.

Using a marker, draw a "┌" mark at the upper left corner of the projected image on the electronic board and a "└" mark at the lower right corner.



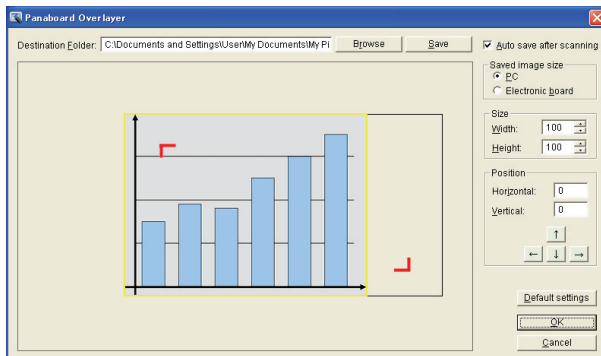
Note

- Ensure that the projected image fits within the scanning area of the electronic board. Data drawn outside of the scanning area will not be scanned.
- Please draw "┌" and "└" marks to the electronic board thickly and widely with the marker. If the marks are too small, it is difficult sometimes to see them when you try calibration.

4. Scan the data on the electronic board.

Press the Copy (Start/Stop) key on the electronic board to scan the image.

- When scanning is complete, a preview image is displayed in the settings window.



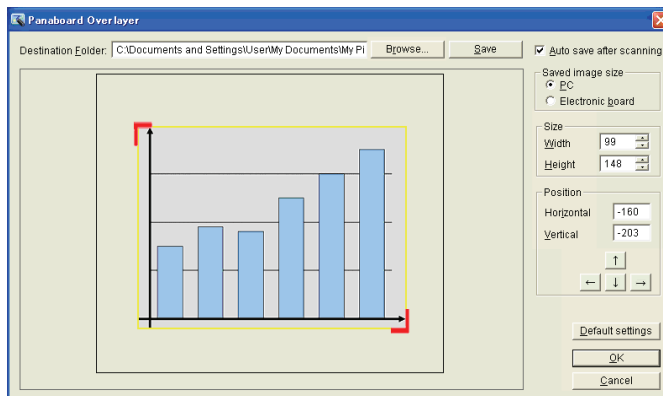
Note

- Do not disconnect the USB cable until the preview image is displayed.
- When you again scan images for calibration from the electronic board, please press [Save] button and after saving them you may scan them from the electronic board.

5. Adjust the position of the scanned image.

Align the position of the projected image and the scanned image with the following procedures:

- 1) Drag the preview image in the settings window so that the mark at the upper left corner aligns with the upper left corner of the projected image.
(You can also adjust the position by entering values in [Horizontal] and [Vertical], by clicking the [↑], [←], [↓] and [→] buttons, or by pressing the arrow keys while holding down the [Alt] key on the keyboard.)
- 2) Adjust the width and/or height of the zoom level so that the mark at the lower right corner aligns with the lower right corner of the projected image.
- 3) Changing the zoom level in Step 2 might cause misalignment in the upper left position. In this case, repeat Step 1 and 2 to align the marks at the upper left and lower right corners with the respective corners of the projected image.



[After calibrating the scanning position]

Note

- When calibration is finished, erase the "┌" and "└" marks drawn on the electronic board.

6. Configure other settings if necessary.

Check the [Destination Folder], [Auto save after scanning] and [Saved image size] settings and make changes as needed.

7. Save the settings.

When calibration and other settings are complete, click the [OK] button to save the settings.

- If the image data has not been saved, a confirmation message appears.
If you only calibrate the position, click [OK] and close the window without saving the image.

Note

- When you again scan images for calibration from the electronic board, please press [Save] button and after saving them you may scan them from the electronic board.

Using Software

To use the software in an actual situation such as a meeting, follow the procedures below.

1. Write information on the projected image using a marker.

Write further explanation and other information as needed on the projected image, using a marker.

2. To save the composite image, press the Copy (Start/Stop) key on the electronic board to scan the image.

When scanning is complete, the projected image and scanned image are composited.

- With the [Auto save after scanning] checkbox selected in the settings window, the composite image is automatically saved to the specified folder.

If the [Auto save after scanning] checkbox is not selected in the settings window, the settings window appears when scanning is complete. Then check the preview window to see if the position is aligned and click the [Save] button to save the composite image.


Note

- Until the electronic board finishes scanning images, you cannot change the projected view of the projector.

3. Repeat Step 1 and 2 while erasing the data written on the electronic board and switching the projected images.

Repeat Step 1 and 2 while erasing the data on the electronic board and switching the projected images as required. Proceed with the meeting.

4. Exit the software.

When the meeting ends, right-click the  icon in the notification area and select [Exit] to exit the software.

Note

- Do not disconnect the USB cable between the electronic board and the computer until the software shuts down.

Removing Software

To remove the installed software, follow the procedures below.

- 1. Power on the computer and start Windows.**
 - Log into an account with Administrator privileges.
- 2. From [Control Panel], select [Add or Remove Programs].**
 - In Windows Vista/Windows 7, select [Uninstall a program].
- 3. Select [Panaboard Overlayer] and remove it.**
- 4. Follow the directions on the screen.**
- 5. When the operation is complete, restart the computer.**

Troubleshooting

Refer to the following table to help solve common problems. If the problem persists, contact your dealer.

Symptom	Possible cause and solution
The computer does not recognize the electronic board. Composite image is not created.	<ul style="list-style-type: none">• Electronic board is not turned on. → Turn on the electronic board.• The USB cable is not connected. → Make sure that the USB cable is connected properly.• The output destination of the electronic board is not set to the computer. → Set the output destination to the computer by referring to the user's guide for the electronic board.• The electronic board is connected via a USB hub. → Do not connect the electronic board via a USB hub.
The projected image and the handwritten image are misaligned.	<ul style="list-style-type: none">• The position of the projected image has changed.• The projector or computer display resolution has changed. → Perform calibration again.

20111001